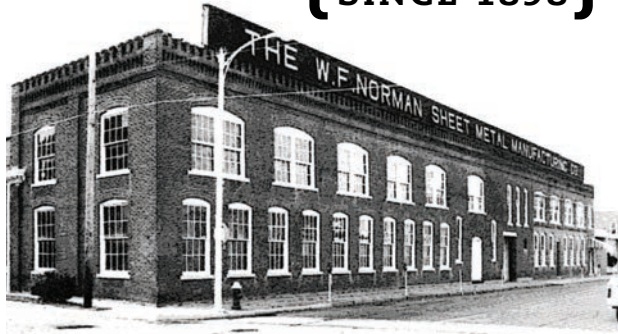


{ PRODUCTS
SINCE 1898 }



Decorative Metal Ceilings/Walls

Ceiling and wall panels are produced in tin, zinc, copper, and brass and feature designs from many eras such as: Victorian, Colonial, Empire, Greek, Gothic, and Art Deco. Ceilings typically come in 2ft. x 4ft. sheets or drop-in panels. Other components include borders, fillers, moldings, center medallions, cornice pieces and wainscoting.



Molding No. 216



Molding No. 1690



Cornice No. 161



Cornice No. 305



Cornice No. 165



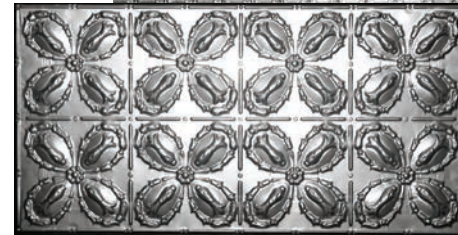
No. 240



No. 2670



No. 250



No. 201



Center No. 162

Sheet Metal Ornaments

The complete line of architectural sheet metal ornamentation includes: moldings, brackets, corbels, rosettes, balusters, urns, capitals, festoons, finials, scrolls, leaves, friezes, marquee enrichments, glass pendant frames, crestings, garlands, panel ornaments, lion heads, conductor heads and fittings.



Bracket No. 72



Conductor Head
No. 912



Capital No. 4555



Cresting No. 5020



Fleur de Lis
No. 2437



Shield No. 2958



Rosette No. 565



Shell No. 4300

Exterior Siding

Stamped in galvanized steel or copper, W.F. Norman steel siding is ideal for both restoration projects and new construction. Siding comes in 28" x 60" sheets.



Pitch-Faced Stone



Pressed Brick



Rock-Faced Brick



No. 3 Cluster Shingle

Custom Reproductions

Have a unique project? Our manufacturing process enables us to make reproductions of original panels on a custom basis. Call now to see if we can help!



Renaissance of a Classic Building

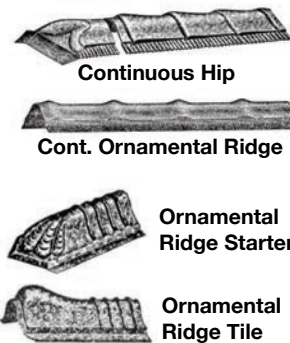
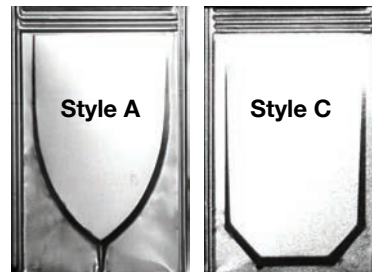
From its turn-of-the-century factory in Nevada, Missouri, the W. F. Norman Corporation still operates machines as old as the company itself. Production methods remain the same as the early days with panels stamped one at a time on antique rope drop hammers, resulting in better quality control than modern hydraulic presses.

Using original dies from 1898, the W.F. Norman Corp. Hi-Art® product line contains 140 ceiling design components and over 1,300 ornaments. Their growing popularity stems not only from nostalgia but from their beauty, permanence and economy.

Lightweight and easy to install, Hi-Art® products are not only an authentic way to restore buildings & homes, they are also widely used to embellish new construction projects.

Metal Shingles

Norman metal shingles from the original 1908 line are produced in galvanized steel or solid copper. Two classic styles are offered, along with all the extra pieces needed for a complete installation.



{ "Good Goods, Reasonable Prices,
Prompt Shipments" }

W.F. Norman Corporation *Hi-Art*
STEEL CORP.

W.F. Norman Corporation *Hi-Art*
STEEL CORP.

(800)641-4038

wfnorman.com | info@wfnorman.com

For our printed catalog, send \$3 to
P.O. Box 323, Nevada, MO 64772

20125

architectural sheet metal